

**3 Stage
Filtration**

Emulsion mist separator

OILMAC

Effective aerosol separation in machining

The OILMAC series of emulsion mist separators reliably filter the cooling lubricant mist and fumes generated during machining processes from the air. Users benefit in three ways: mist deposits on machines, slippery workshop floors and health risks for employees are effectively reduced.

The **three-stage filter system** achieves a separation efficiency of **up to 99.95%** – so the cleaned air can be safely returned to the work area. The separated cooling lubricants can be fed back into the machine circuit.

The compact devices are installed directly on the housing of CNC machines and are connected via a flexible hose.

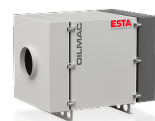
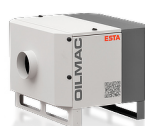
Your benefits

- » Quick and easy installation
- » Available in four performance levels
- » Compact design
- » Multi-stage filtration for high separation efficiency
- » Filter replacement and maintenance possible without tools



Further
information!





Technical Data

		OILMAC 400	OILMAC 800	OILMAC 1600	OILMAC 3000
Max. volume flow	m ³ /h	420	840	1800	3300
Intake opening	mm	150	200	250	300
Mains voltage	V	230	400	400	400
Nominal power	kW	0.24	0.55	1.1	2.2
Dimensions (L/W/H)	mm	640 × 650 × 510	1,140 × 685 × 475	1,270 × 685 × 805	1,790 × 650 × 1,265
Weight	kg	50	80	130	220
Sound pressure level	dB(A)	66	69	71	74

Order Number

Design with HEPA backup filter	56200	56201	56202	56203
Design with backup filter made of metal mesh	–	56211	56212	56213
Filter unit without fan	–	56221	56222	56223

All devices include a 5.0 m siphon hose

Any questions?
Contact us!

ESTA Apparatebau GmbH & Co. KG
Gotenstraße 2 – 6
89250 Senden / Germany
Phone +49 7307 3409680-0
Fax +49 7307 804-500
E-Mail info@esta.com

www.esta.com

ESTA Extraction Technology

ESTA extraction technology has provided comprehensive solutions for all application areas for more than 50 years. From single devices for a wide range of application purposes to complex extraction systems – we ensure a clean working environment at all times. This protects machines, benefits your employees' health and lays the groundwork for efficient and quality-oriented working.

